

Breadcrumb

1. [Home](#)
2. Print
3. Pdf
4. Node
5. Entity Print

Pest Information for Illinois

Last Modified:

Hawaii (includes America Samoa, Commonwealth of the Northern Mariana Islands, and Guam)

Active Federal Quarantines

The following pests have Federal quarantines in certain areas of this State. Other Federal and State quarantines may apply. Learn about [State-level quarantines](#).

There are no Federal quarantines right now.

[Asian Longhorned Beetle](#)

[Attacks: hardwood trees, national forests](#)



[Citrus Greening and Asian Citrus Psyllid](#)

[Attacks: citrus trees](#)



[Imported Fire Ants](#)

[Attacks: buds and fruits of crop plants](#)



[Mediterranean Fruit Fly](#)

[Attacks: fruits, vegetables and nuts](#)



[Mexican Fruit Fly](#)

[Attacks: fruits, particularly citrus and mango](#)



[Oriental Fruit Fly](#)

[Attacks: fruits and vegetables](#)



[Spongy Moth](#)

[Attacks: trees and shrubs](#)



[Sudden Oak Death](#)

[Attacks: trees](#)



UGA1427111

Watch Out For These Pests

This state has some crop, forest, or urban area(s) where the following pests or diseases could survive year-round.

[Asian Longhorned Beetle](#)

[Attacks: hardwood trees, national forests](#)



[Citrus Greening and Asian Citrus Psyllid](#)

[Attacks: citrus trees](#)



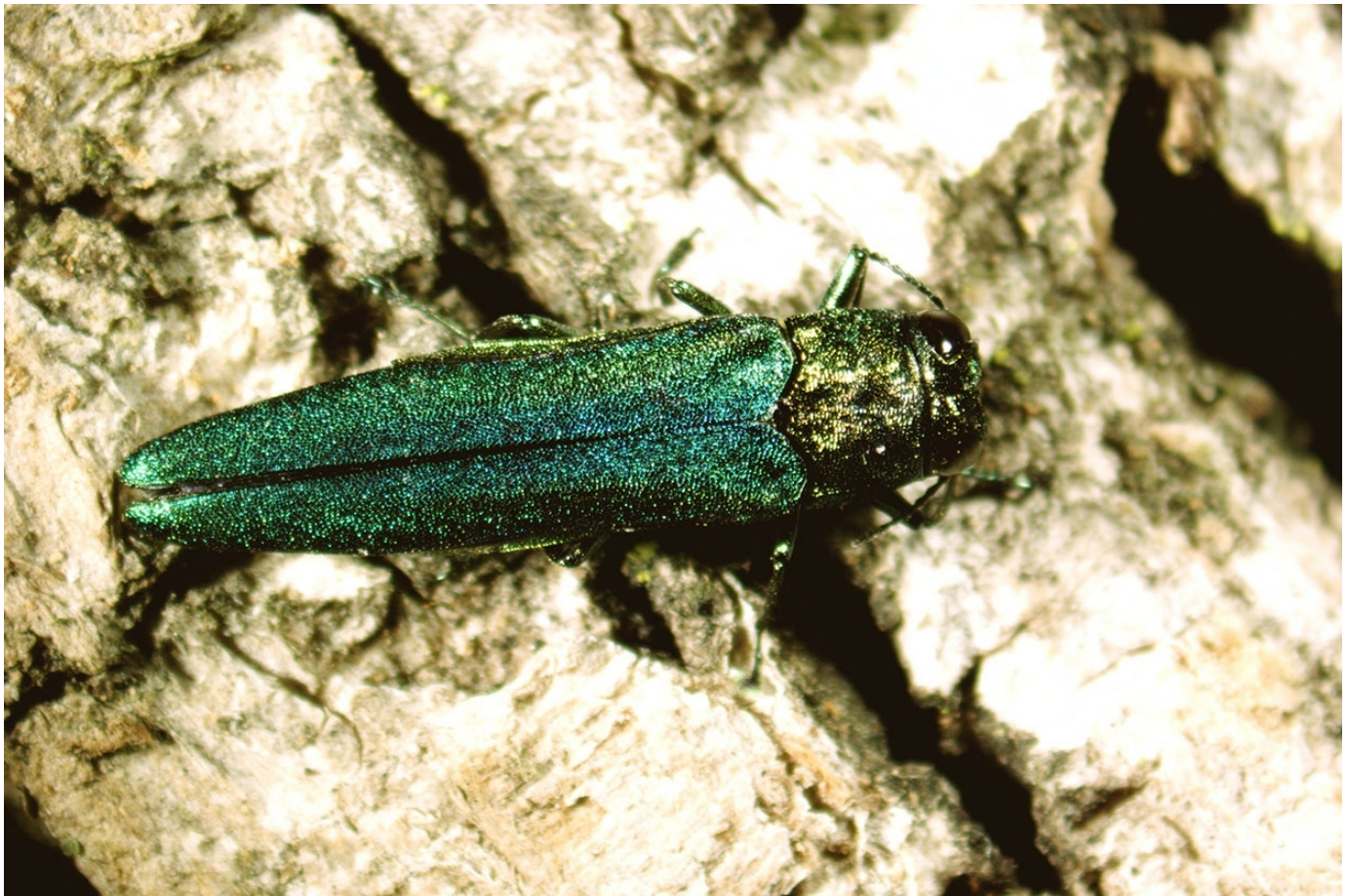
[Coconut Rhinoceros Beetle](#)

[Attacks: palm trees, including coconut, date, and oil palms](#)



[Emerald Ash Borer](#)

[Attacks: ash trees](#)



European Cherry Fruit Fly

Attacks: Sweet and tart cherries, and other environmental host such as honeysuckle and dogwood



[European Grapevine Moth](#)

[Attacks: wine and table grapes](#)



[Flighted Spongy Moth Complex](#)

[Attacks: North American tree and shrub species](#)



[Giant African Snail](#)

[Attacks: plants, fruits and vegetables](#)



[Imported Fire Ants](#)

[Attacks: buds and fruits of crop plants](#)



[Mediterranean Fruit Fly](#)

[Attacks: fruits, vegetables and nuts](#)



[Mexican Fruit Fly](#)

[Attacks: fruits, particularly citrus and mango](#)



[Old World Bollworm](#)

[Attacks: more than 180 plant species](#)



[Oriental Fruit Fly](#)

[Attacks: fruits and vegetables](#)



[Spongy Moth](#)

[Attacks: trees and shrubs](#)



[Spotted Lanternfly](#)

[Attacks: fruit, ornamental and woody trees](#)



[Sudden Oak Death](#)

[Attacks: trees](#)



[See More](#) [See Less](#)

Report a Pest

Have you recently encountered the listed pests or any invasive species?

If so, contact the State Plant Health Director below:

Illinois State Plant Health Director

Greg Rentschler

Email: greg.j.rentschler@usda.gov

Phone: [847-699-2417](tel:847-699-2417)

Fax: [847-699-2430](tel:847-699-2430)

Mailing Address:

1001 E. Touhy Ave

Suite 187

Des Plaines, IL 60018

Office Manager:

Lloyd Collins: (847) 699-2422

Email: lloyd.collins@usda.gov

Associate Executive Director:

Clint Burfitt: (503) 307-3299

[Print](#)